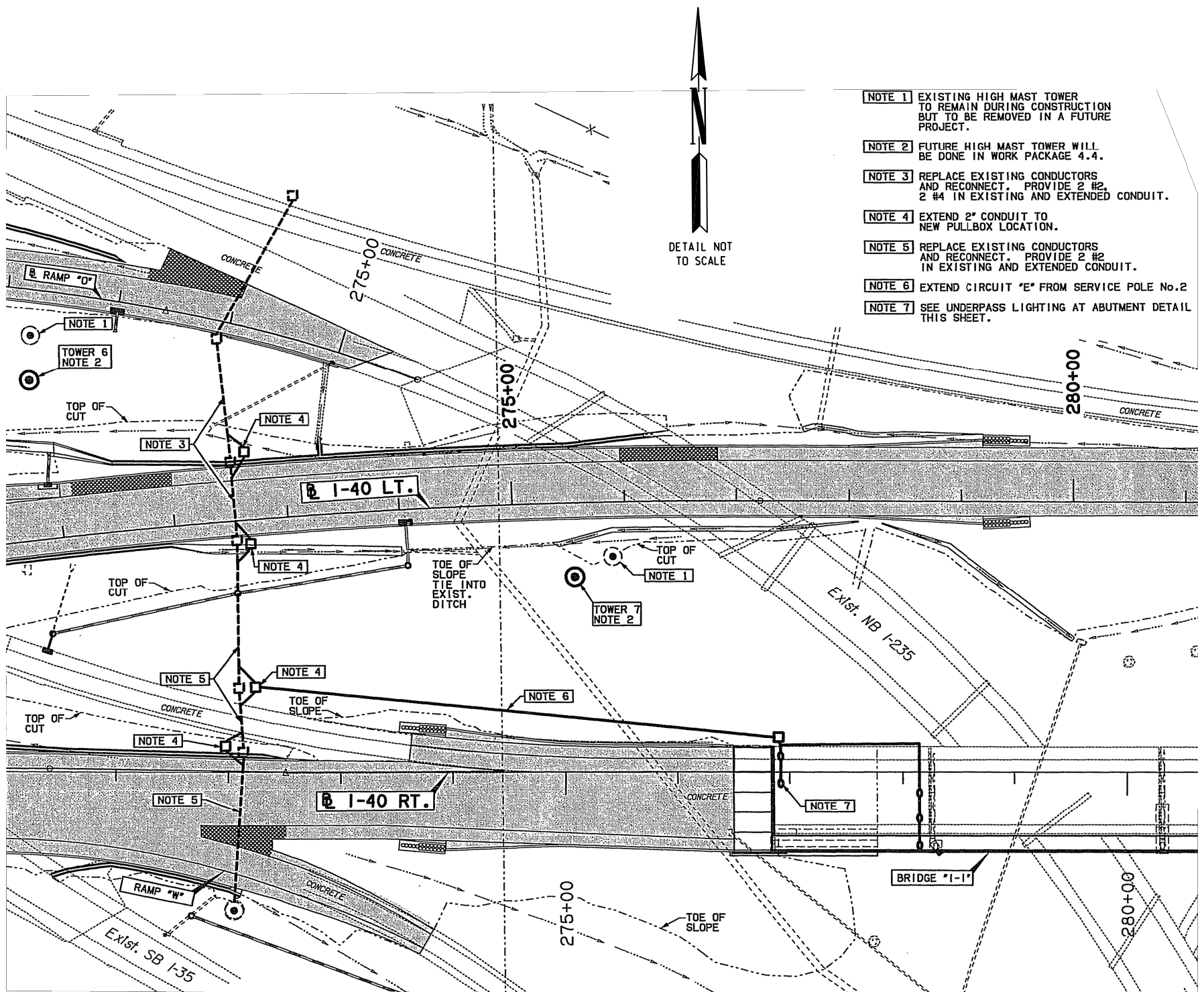


REVISIONS		
NO.	DESCRIPTION	DATE



I-40 LIGHTING PAY QUANTITIES

I-40 from I-35 to I-44 in OKC, OK

0303 TRAFFIC		UNIT	TOTAL
ITEM	DESCRIPTION		
803(A) 8065	PULL BOX (SIZE I)	(1) EA	211
803(A) 8066	PULL BOX (SIZE II)	(2) EA	6
807 8092	BREAKAWAY BASE (DES. B)	(3) EA	47
809(A) 8090	ROADWAY LUMINAIRE	(4) EA	25
809(B) 8098	UNDERPASS LUMINAIRE	(5) EA	10
809(E) 8103	HIGH MAST LUMINAIRE	(6) EA	10
811 8036	1/C NO. 2 ELECTRICAL CONDUCTOR	(7) LF	12000
811 8038	1/C NO. 4 ELECTRICAL CONDUCTOR	(8) LF	106000
811 8044	1/C NO. 10 ELECTRICAL CONDUCTOR	(9) LF	2500
811 8046	1/C NO. 12 ELECTRICAL CONDUCTOR	(10) LF	5500

LIGHTING GENERAL CONSTRUCTION NOTES

- THESE PAY ITEMS ARE INTENDED TO REPLACE MISSING WIRE AND BURNED OUT LIGHT BULBS IN KIND ON THE ORIGINAL I-40 CROSSTOWN PROJECTS. THE EXTENTS OF THE ORIGINAL I-40 CROSSTOWN PROJECTS RUNS FROM THE I-35 INTERCHANGE TO THE I-44 INTERCHANGE.
- THESE PAY ITEMS WILL BE FOR ALL TOWER, MAINLINE, RAMP AND SERVICE ROAD LIGHTING.
- THESE PAY ITEMS ARE INTENDED TO HAVE EVERY LIGHT FULLY OPERATIONAL UPON COMPLETION OF THIS PROJECT.
- THESE PAY ITEMS ARE ESTIMATED QUANTITIES FROM THE ORIGINAL I-40 CROSSTOWN PROJECTS TO BE USED TO REPLACE ALL NON-OPERATIONAL EQUIPMENT IN KIND WITH THE ORIGINAL I-40 CROSSTOWN PROJECT PLANS.
- SINCE MANY OF THE LIGHTING CIRCUITS ARE INOPERABLE THE QUANTITIES ON THIS SHEET ARE LARGELY UNKNOWN AND THEREFORE ARE ESTIMATED QUANTITIES ONLY. THE FINAL QUANTITIES WILL BE DETERMINED ONCE THE LIGHTING CIRCUITS HAVE BEEN RESTORED.
- IT IS THE INTENTION OF THIS PROJECT TO REPLACE ONLY THE ITEMS THAT ARE NECESSARY FOR THE LIGHTING SYSTEM TO BE FULLY OPERATIONAL.
- THE CONTRACTOR WILL ONLY BE PAID FOR THE QUANTITIES OF EACH PAY ITEM THAT ARE ACTUALLY INSTALLED ON THIS PROJECT.

LIGHTING PAY QUANTITY NOTES

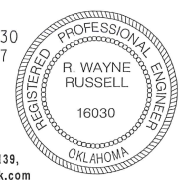
- THIS PAY ITEM IS FOR THE INSTALLATION OF LOCKING PULL BOX LIDS TO BE INSTALLED ON EVERY SIZE I PULL BOX ON THE ORIGINAL I-40 CROSSTOWN PROJECTS. THESE LIDS SHALL BE "COPPER LOCKER" D1000A TYPE I LIDS, OR APPROVED EQUAL. FOR INFORMATION REGARDING THESE LIDS THE CONTRACTOR SHALL CONTACT EMSCO ELECTRIC AT (405)235-6331. LOCKING LIDS SHALL BE INSTALLED IN ACCORDANCE WITH THE MANUFACTURER SPECIFICATIONS.
- THIS PAY ITEM IS FOR THE INSTALLATION OF LOCKING PULL BOX LIDS TO BE INSTALLED ON EVERY SIZE II PULL BOX ON THE ORIGINAL I-40 CROSSTOWN PROJECTS. THESE LIDS SHALL BE "COPPER LOCKER" D1000B TYPE II LIDS, OR APPROVED EQUAL. FOR INFORMATION REGARDING THESE LIDS THE CONTRACTOR SHALL CONTACT EMSCO ELECTRIC AT (405)235-6331. LOCKING LIDS SHALL BE INSTALLED IN ACCORDANCE WITH THE MANUFACTURER SPECIFICATIONS.
- THIS PAY ITEM IS FOR THE INSTALLATION OF LOCKING BREAKAWAY BASE COVERS TO BE INSTALLED ON EVERY BREAKAWAY BASE ON THE ORIGINAL I-40 CROSSTOWN PROJECTS. THESE BREAKAWAY BASE COVERS SHALL BE "COPPER LOCKER" D500B BREAKAWAY BASE COVERS, OR APPROVED EQUAL. FOR INFORMATION REGARDING THESE BREAKAWAY BASE COVERS THE CONTRACTOR SHALL CONTACT EMSCO ELECTRIC AT (405)235-6331. LOCKING COVERS SHALL BE INSTALLED IN ACCORDANCE WITH THE MANUFACTURER SPECIFICATIONS.
- THIS PAY ITEM IS FOR THE REPLACEMENT OF ANY BURNED OUT 250W HPS LIGHT BULBS IN THE LIGHT FIXTURES ON THE RAMPS AND THE FRONTAGE ROADS AS WELL AS THE BURNED OUT 400W HPS BULBS IN THE LIGHT FIXTURES FOR THE MAINLINE OF I-40.
- THIS PAY ITEM IS FOR THE REPLACEMENT OF ANY BURNED OUT 100W HPS LIGHT BULBS IN THE UNDERPASS LIGHT FIXTURES FOR THE MAINLINE OF I-40.
- THIS PAY ITEM IS FOR THE REPLACEMENT OF ANY BURNED OUT 1000W HPS LIGHT BULBS IN THE LIGHT FIXTURES ON THE HIGH MAST TOWERS FOR THE MAINLINE, RAMPS AND SERVICE ROADS OF I-40.
- THE LOCATION OF THE NO.2 WIRE IS SHOWN IN THE DETAIL ON THIS SHEET. THIS IS THE ONLY LOCATION THAT USED NO. 2 WIRE ON THE I-40 CROSSTOWN PROJECTS.
- THIS WIRE RUNS FROM THE POWER SOURCES TO ALL OF LIGHT POLES AND LIGHT TOWERS ON THE ORIGINAL I-40 CROSSTOWN PROJECTS. IT IS INTENDED TO REPLACE ANY MISSING WIRE FROM THE ORIGINAL I-40 CROSSTOWN PROJECTS IN KIND.
- THIS WIRE PROVIDES POWER TO THE UNDERPASS LIGHTING ON THE ORIGINAL I-40 CROSSTOWN PROJECTS. IT IS INTENDED TO REPLACE ANY MISSING WIRE FROM THE ORIGINAL I-40 CROSSTOWN PROJECTS IN KIND.
- THIS WIRE PROVIDES POWER TO THE ROADWAY LUMINAIRES ON THE I-40 MAINLINE, RAMPS AND SERVICE ROADS. THIS QUANTITY IS AN ESTIMATED QUANTITY TO BE USED IN THE EVENT THAT THE ORIGINAL WIRE IS MISSING.

I-13-15 G:\01\Projects\1-24\17B Downtown Blvd WP 5/C Task 6\CAD\QUANT LIGHT CROSSTOWN.dgn

R. Wayne Russell
R. WAYNE RUSSELL, P.E. # 16030
C.A. # 1160, RENEWAL 06-30-17

11-13-15
DATE

Traffic Engineering Consultants, Inc.
6000 S. Western, Suite 300 - Oklahoma City, OK 73139,
Ph: 405-720-7721, Fax: 405-720-9848, Web: www.tecok.com



Design	RWR	11-13-15
Drawn	SB	11-13-15
TEC A CLEAR DIRECTION		

I-40 CROSSTOWN LIGHTING PAY QUANTITIES AND NOTES

State Job No. 17428(89) Sheet No. 10A